

# Into the Stacks

## Volume 3 Issue 3, Summer 2005

### FALL COURSE LINE-UP

Eight courses have been added to the Library instruction initiative. See if one of these one-hour sessions is right for you. Look for dates of classes to be posted in September.

*What have you learned today?*

#### CLASSES ON THE INTERNET (BASIC SEARCHING)

##### ∞ Zen and the Art of the Google

Learners are guided through the components of Google as a search engine and see live demos of eight aspects of Google.

#### CLASSES ON LIBRARY RESOURCES

##### ∞ Library Orientation

Orientation presentations and Noon conferences presented upon request.

##### ∞ The Library Website for Dummies

Learners are guided through the electronic resources available through the Library portal.

##### ∞ Medline: Ovid vs. PubMed, an overview

Learners become familiar with Medline by viewing two popular interfaces: Ovid and PubMed.

#### CLASSES ON HOW TO SEARCH THE LITERATURE

##### • Searching CINAHL on Ovid

This Two Part session introduces users to the Ovid interface and guides users through what each database can supply. Part II is an online demonstration of CINAHL, Cumulative Index of Nursing and Allied Health Literature.

##### • Searching Medline on Ovid

This Two Part session introduces users to the Ovid interface and guides users through what each database can supply. Part II is an online demonstration of Medline.

##### • Searching Medline on PubMed

Learners are introduced to Medline using the Entrez PubMed interface.

##### • An Introduction to Practicing Evidence-Based Medicine

Learners become familiar with searching techniques in Medline (Ovid and PubMed interfaces) for retrieving literature pertinent to patient care - clinical study categories based on Etiology, Diagnosis, Therapy, and Prognosis. Prior knowledge of Medline is required for this session.

### OVID HAS A NEW LOOK

On July 12, 2005, Ovid unveiled its newest interface. Use the same Ovid features or look for new features such as the 'Find Citation' feature to locate individual articles.

### NEW OVID ENTRY SCREEN

The screenshot shows the Ovid web gateway interface. At the top, there is a navigation bar with 'OVID' and 'Choose a database' dropdown. Below this is a list of databases with checkboxes and links:

- [Ovid MEDLINE\(R\)](#) 1966 to March Week 1 2005
- [Ovid MEDLINE\(R\)](#) 1996 to March Week 1 2005
- [Journals@Ovid Full Text](#) March 9, 2005
- [Books@Ovid](#) March 3, 2005
- [Your Journals@Ovid](#)
- [BIOSIS Previews](#) 2004
- [Food Science and Technology Abstracts](#) 1969 to 2005 March Week 2
- [Ovid MEDLINE\(R\) Daily Update](#) March 09, 2005
- [Ovid OLDMEDLINE\(R\)](#) 1950 to 1965
- [R & D Insight](#) 1994 to March 07, 2005

### NEW OVID FULL-TEXT ARTICLE SCREEN

The screenshot shows the full-text article page for 'The Journal of Pediatrics'. The article title is 'EFFECT OF ASTHMA INTERVENTION ON CHILDREN WITH UNDIAGNOSED ASTHMA'. The authors listed are JOSEPH, CHRISTINE L.M. PHD; HAVSTAD, SUZANNE MA; ANDERSON, ELIZABETH W. MPH; BROWN, RANDALL MD; JOHNSON, CHRISTINE COLE PHD; CLARK, NOREEN M. PHD. The abstract states: 'Objective: To measure the effect of an asthma intervention on the functional status and morbidity of children with undiagnosed asthma. Study design: Data from a randomized trial were used to compare outcomes at baseline and follow-up for children with undiagnosed and diagnosed asthma. We studied 510 symptomatic children with diagnosed asthma (diagnosed)'. The page also includes a 'Links' section with options like 'Abstract', 'Complete Reference', 'Full Text (PDF) 273 k', and 'Library Holdings', and an 'Outline' section with a tree view of the article's structure.

### THAT'S A GOOD QUESTION!

MANY OF YOU HAVE ASKED,

**"HOW DO I FIND JOURNALS FULL-TEXT IN OVID?"**

If you want to get a full-text article from Ovid without having to use the search through the Medline screens, try going directly to "Your Journals @ Ovid"

This is the next to the last option on the first screen as you enter Ovid. Once there, follow these steps:

1. Click 'Browse Journals by Name'
2. Click 'Issue List' of the journal title you wish to view. This gives you the complete list of issues available in full-text.

3. When you locate the issue you want to view, click 'Table of Contents' to see full titles and page numbers of that issue.
4. Click 'Ovid Full Text' to view entire article.
5. Most articles allow you to view/print/save the PDF version of the article. To view this, click 'Full Text (PDF)' from the 'Output' box on the right side of the screen.
6. Article opens in Adobe Acrobat Reader from within Ovid. You can then Save, Print or e-mail the article.

## LIBRARY ORIENTATION GUIDES

Look for the new paperback guides available in the Library and the cafeteria.

## LIBRARY COMMITTEE

A Library Committee meeting was June 10<sup>th</sup> from 1pm-2pm in the Karen Jones Conference Room. Agenda items covered general operations announcements, updates on new clinical resources, and information about the Patient and Family Education Center website and resources.

## LIBRARY EDUCATION AND OUTREACH

On August 17, 2005, Mary Jo Dorsey will present an overview of Ovid along with an introduction to evidence-based medicine as a part of the Department of Medicine noon lecture series. Time: 12:00pm – 1:00pm in the Burstin Room.

*If your department would like to schedule a Library Orientation presentation at a noon conference or any other time, please contact Mary Jo at 412-578-4708 or email at [mjdorsey@wpahs.org](mailto:mjdorsey@wpahs.org).*

## SUPPORT TO LIBRARY FUND

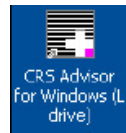
If you are interested in making a donation to the Library, please contact Mary Jo Dorsey at 412-578-4708 or email at [mjdorsey@wpahs.org](mailto:mjdorsey@wpahs.org) or Beverly Beisgen at the WPH Foundation at 412-578-4049.

## LIBRARY WEBSITES

Visit the Health Sciences Library on the WPH Intranet at: <http://home.wpahs.org/wph/library/index.htm>

And on the web at:  
<http://www.wpahs.org/education/library/wph/index.html>

## PATIENT EDUCATION CORNER



## CLINICAL REFERENCE SYSTEM

**DOES THIS ICON LOOK FAMILIAR YET?** We hope so! Use the Clinical Reference System to supply your patients with sound information about their conditions and their medications. The information is current and easy-to-read.

## HEALTH INFORMATION FOR PATIENTS AND FAMILIES

If you encounter a patient or family member who is looking for health information, or just wants to read the newspaper or use a computer, be sure to point them to the Library displays now placed throughout the clinical units. Displays have a tear-off card providing information about the Patient and Family Education Center, located within the Library. If you would like to receive a Display panel for your area, contact Mary Jo at 578-4708.

**Patient and Family Education Center Website**  
<http://www.wpahs.org/education/library/wph/pfec/pfec.html> Bookmarks with these addresses available in the Library.

